

This user's manual describes the installation procedure for the YKMUSB USB driver. Refer to relevant instructions for your operating system (Windows 8.1, Windows 10, or Windows11).

Trademarks

- Microsoft, Windows, Windows 8.1, Windows 10, and Windows 11 are either registered trademarks or trademarks of Microsoft Corporation in the United States and/or other countries.
- Adobe, Acrobat, and PostScript are trademarks of Adobe Systems Incorporated.
- In this manual, the ® and ™ symbols do not accompany their respective registered trademark or trademark names.
- Other company and product names are trademarks or registered trademarks of their respective companies.

Disclaimers

By downloading and installing this software, the customer agrees to all of the following disclaimers.

- Yokogawa bears no liability for any problems occurring as a result of downloading or installing this software.
- Yokogawa bears no responsibility for any damage caused directly or indirectly as a result of using this software.
- This software is provided free of charge, however no unlimited warranty against software defects exists, nor is any claim made that the product is free of all defects whatsoever. Also, Yokogawa is not always able to repair defects ("bugs") in, or respond to questions or inquiries about this software.
- Yokogawa reserves all rights to this software, including but not limited to all property rights, ownership rights, and intellectual property rights.

System Requirements

• Personal Computer (PC)

- A PC running Microsoft Windows XP with a Pentium 4 2 GHz or faster CPU
- A PC running Microsoft Windows 8.1, Windows 10, or Windows11 with a Core2 Duo 2 GHz or faster CPU and 1 GB or more of memory

• Operating System

The supported OS versions vary depending on the version of the USB driver (YKMUSB) that you are installing.

Version 2.x.x.x: Microsoft Windows 11

Version 1.x.x.x: Microsoft Windows 8.1 or Windows 10

Installing the Driver

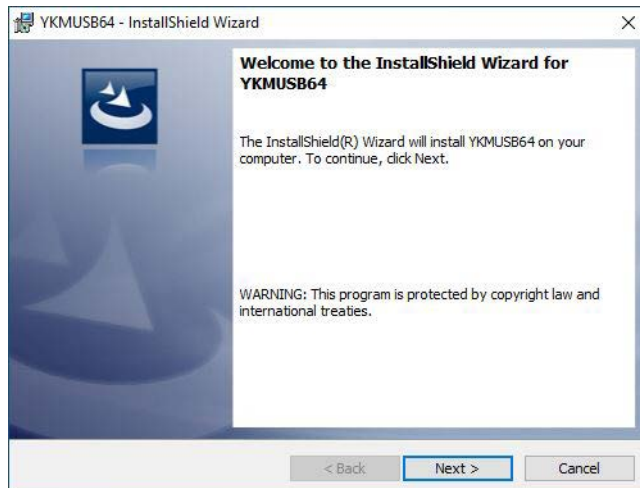
CAUTION

Do not connect your PC to the measuring instrument when you are installing the driver.

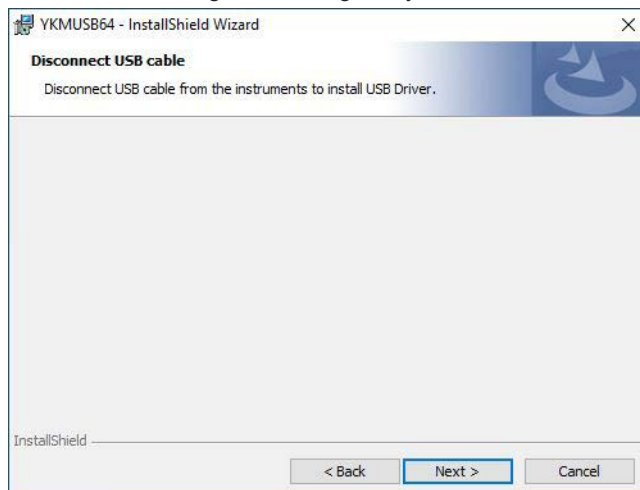
Windows 8.1 and Windows 10 (for USB driver version 1.x.x.x)

This section describes the installation procedure using Windows 10 screenshots.

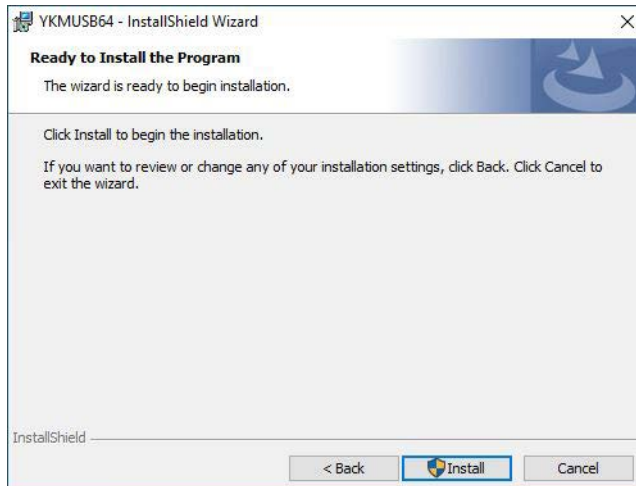
1. On your PC's hard disk, decompress the compressed driver file that you have downloaded.
2. Run the Setup.exe file. The installation wizard starts.



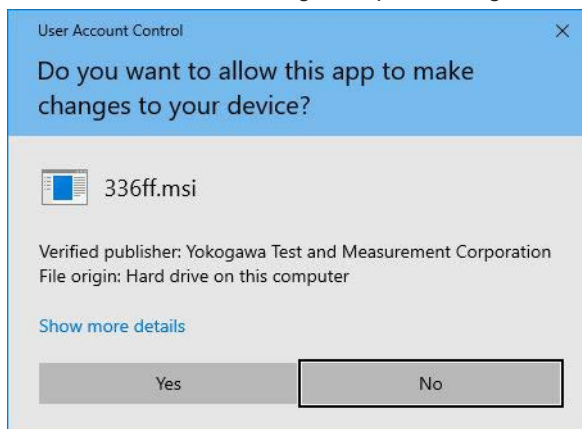
3. Click **Next**. A message confirming that your PC is not connected to the measuring instrument appears.



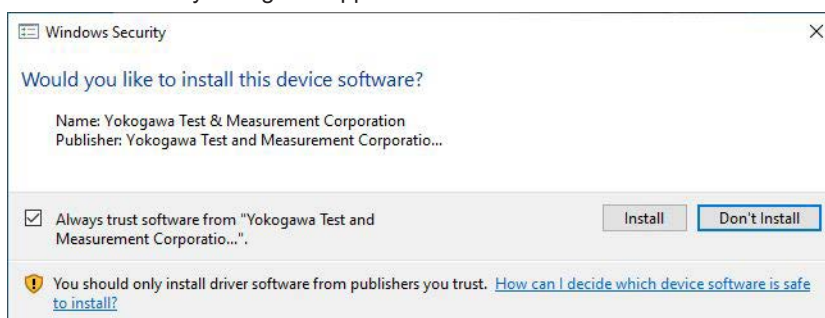
4. Click **Next**. An installation confirmation dialog box appears.



5. Click **Install**. A progress bar appears, and the driver installation starts.
A User Account Control dialog box opens during the installation.

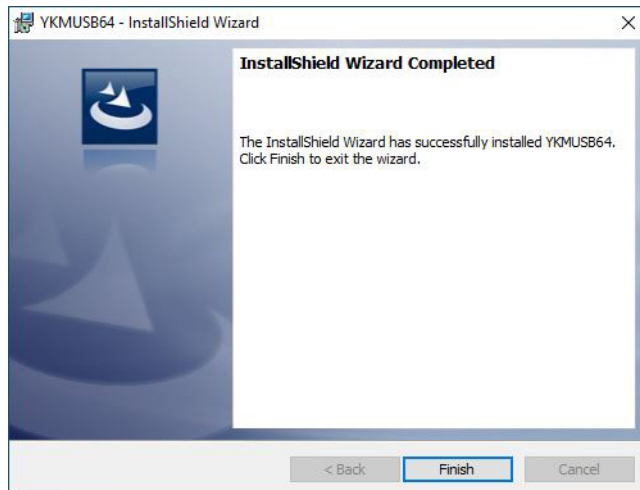


6. Click **Yes**. The installation continues.
A Windows Security dialog box appears.



7. Click **Install**.

When the installation is complete, the installation completed dialog box appears.



8. Click **Finish**. The dialog box closes.

The USB driver is installed to the following folder.

32 bit: **C:\Program Files\YOKOGAWA\Drivers\TM\ykmusb**

64 bit: **C:\Program Files(x86)\YOKOGAWA\Drivers\TM\ykmusb**

9. Connect the measuring instrument to your PC.

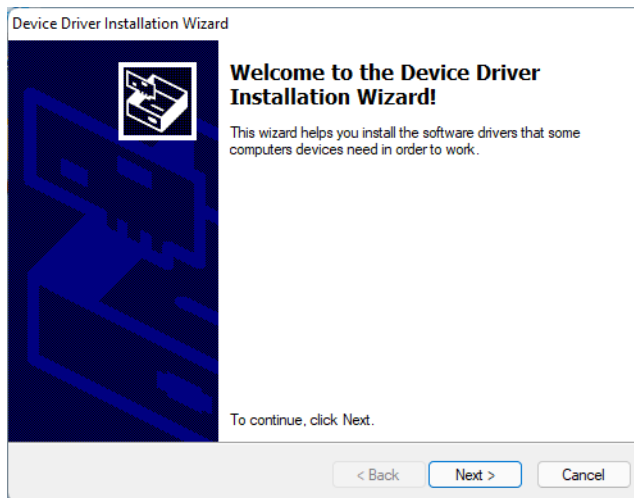
An icon appears in the notification area, and the driver is installed automatically.

When the driver has been successfully installed, "Yokogawa USB Device" appears in Device Manager.

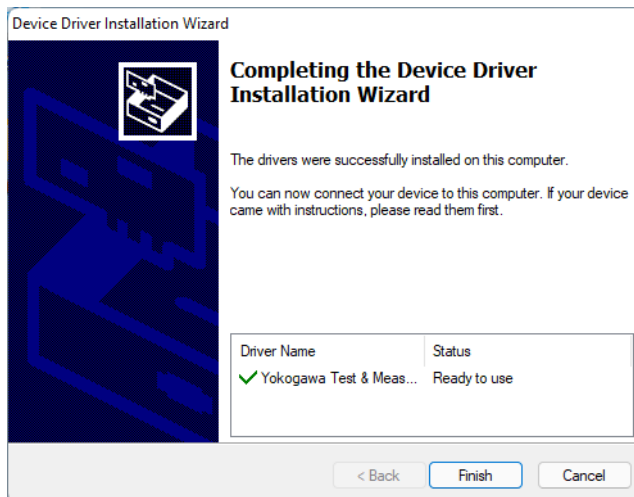
Windows 11 (for USB driver version 2.x.x.x)

If an older version of YKMUSB is already installed, uninstall it (see page 6).

1. Unzip the driver file you downloaded on your PC.
2. Run Setup.exe. An installation wizard opens.

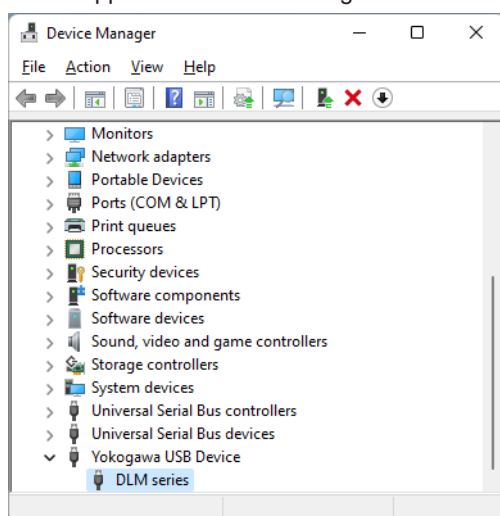


3. Click **Next**. The driver installation begins.
4. When the installation is complete, an installation complete window appears.



5. Click **Finish**. The installation wizard closes.

6. Connect the measuring instrument to the PC. When the driver is installed successfully, “Yokogawa USB Device” appears in Device Manager.



Uninstalling the Driver

CAUTION

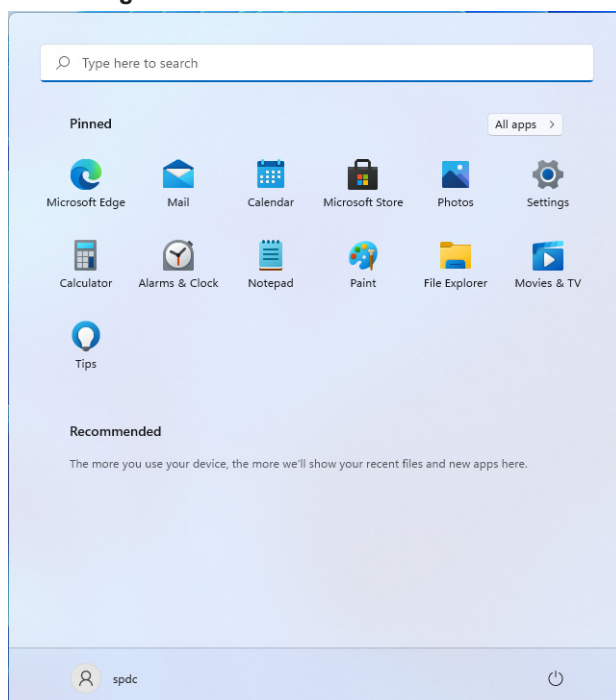
Do not connect your PC to the measuring instrument when you are uninstalling the driver.

Windows 8.1 and Windows 10 (for USB Driver Version 1.x.x.x)

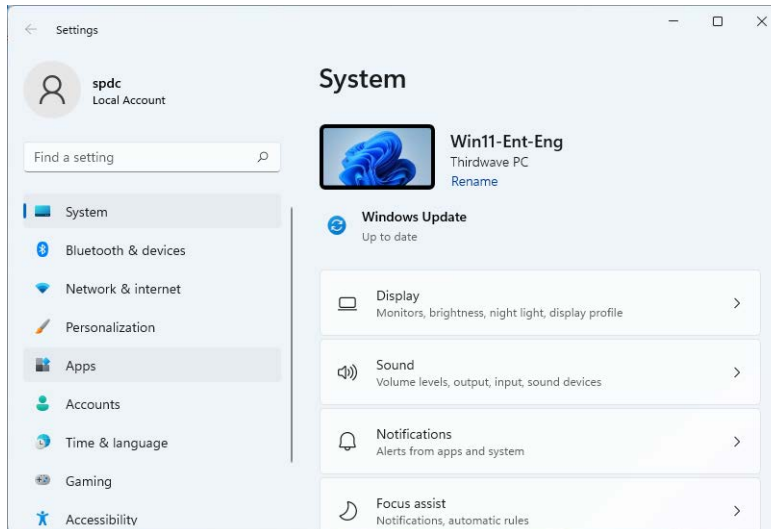
1. In Control Panel, remove YMUSB.

Windows 11 (for USB driver version 2.x.x.x)

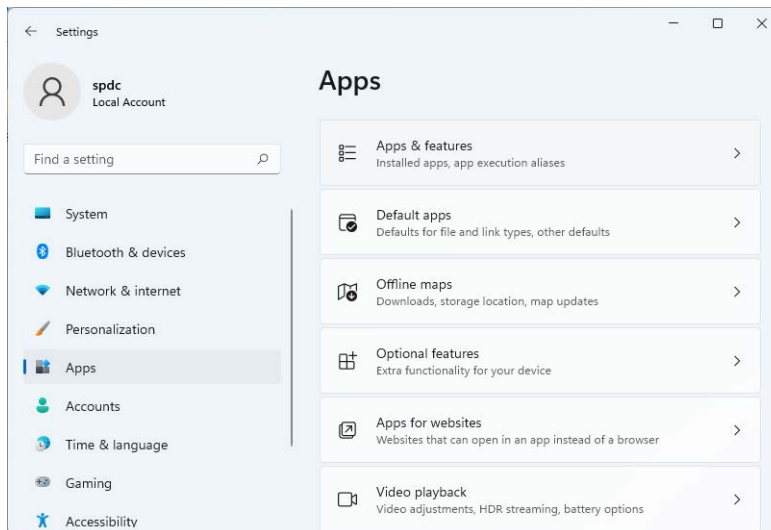
1. Click **Settings** on the Start menu.



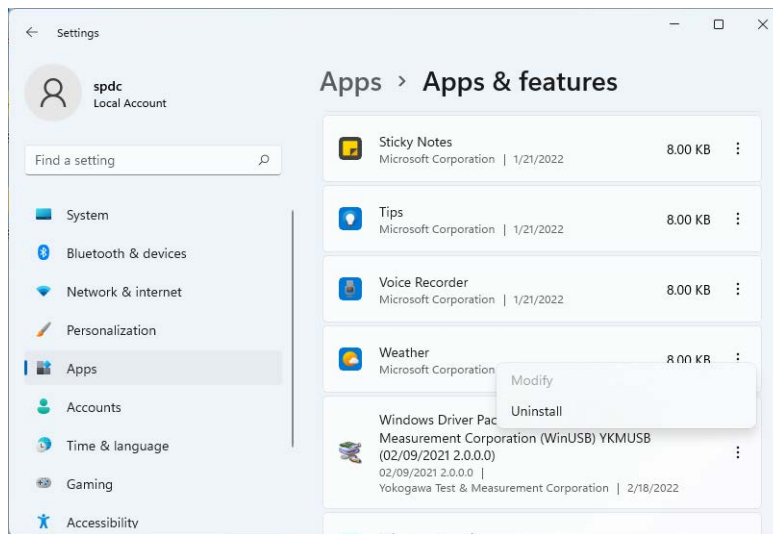
2. A Settings window appears. Click **Apps**.



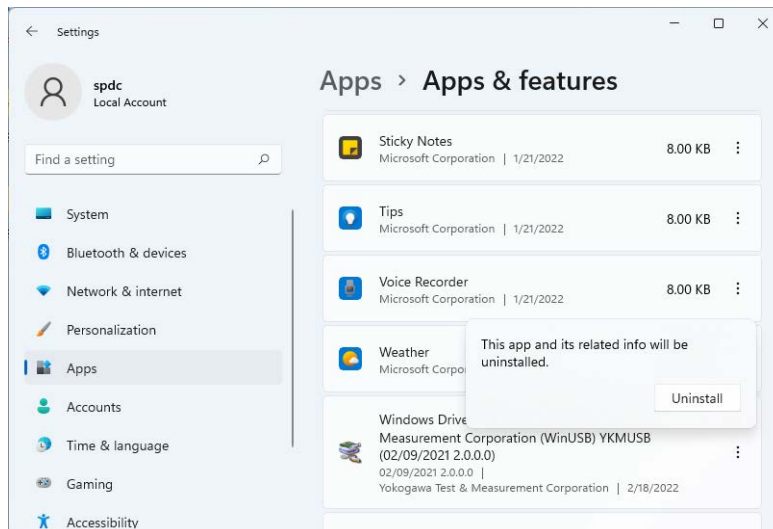
3. A list of apps appears. Click **Apps and features**.



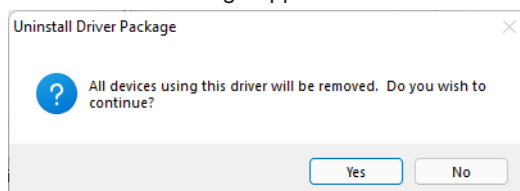
4. A list of apps and features appears. Select **Windows Driver Package - Yokogawa Test & Measurement Corporation (WinUSB) YKMUSB**, and click **Uninstall**.



5. A confirmation window appears. Click **Uninstall**.



6. A confirmation message appears. Click **Yes**.



7. Uninstallation is complete.